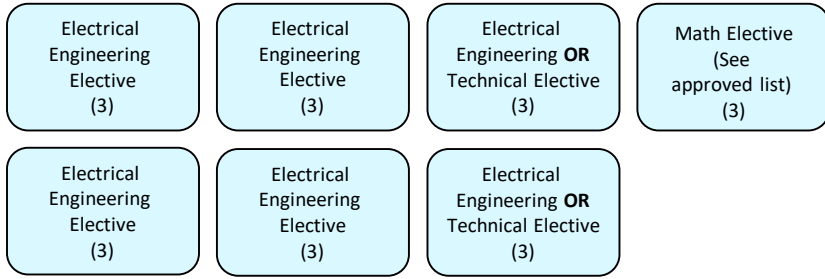


# Bachelor of Science in Electrical Engineering (Effective Fall 2020)

engineering-advising@fau.edu • 561.297.2780 • dessa.fau.edu • ceecs.fau.edu



## Electrical Engineering Electives Options:

CDA 4630	Intro. to Embedded Systems
EEE 4340	Digital Electronics
EEL 4216	Electric Power Systems
EEL 4220	Electrical Machines
EEL 4281	Photovoltaic Power Systems
EEL 4360C	High Frequency Amplifier Design
EEL 4421	RF Devices and Circuits
EEL 4433C	RF and Microwave Lab
EEL 4436C	Microwave Engineering
EEL 4461	Intro to Antennas
EEL 4478	Electromagnetic Compatibility
EEL 4519	Telecommunication Engineering
CDA 4210	Introduction to VLSI
EEL 4905	Directed Independent Study (3 crs max)
EEL 4930	Special Topics

## Technical Electives Options:

EGN 3343	Eng. Thermodynamics
EGN 3311	Statics
IDS 3949	Co-Op/Internship (Max 3 cr allowed)
COP 3014	Found. of Comp. Science
COP 3530	Data Structures & Algorithms
COP 3813	Intro. to Internet Computing
CDA 4102	Structured Computer Architecture
CEN 4214	Software-Hardware Co-design
IDS 3949	Co-Op/Internship (3 crs max)

## Math Electives Options:

MAS 3203	Introductory Number Theory
MAS 2103	Matrix Theory
MAD 2104	Discrete Math

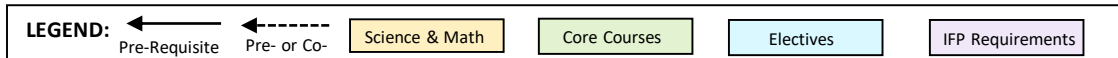
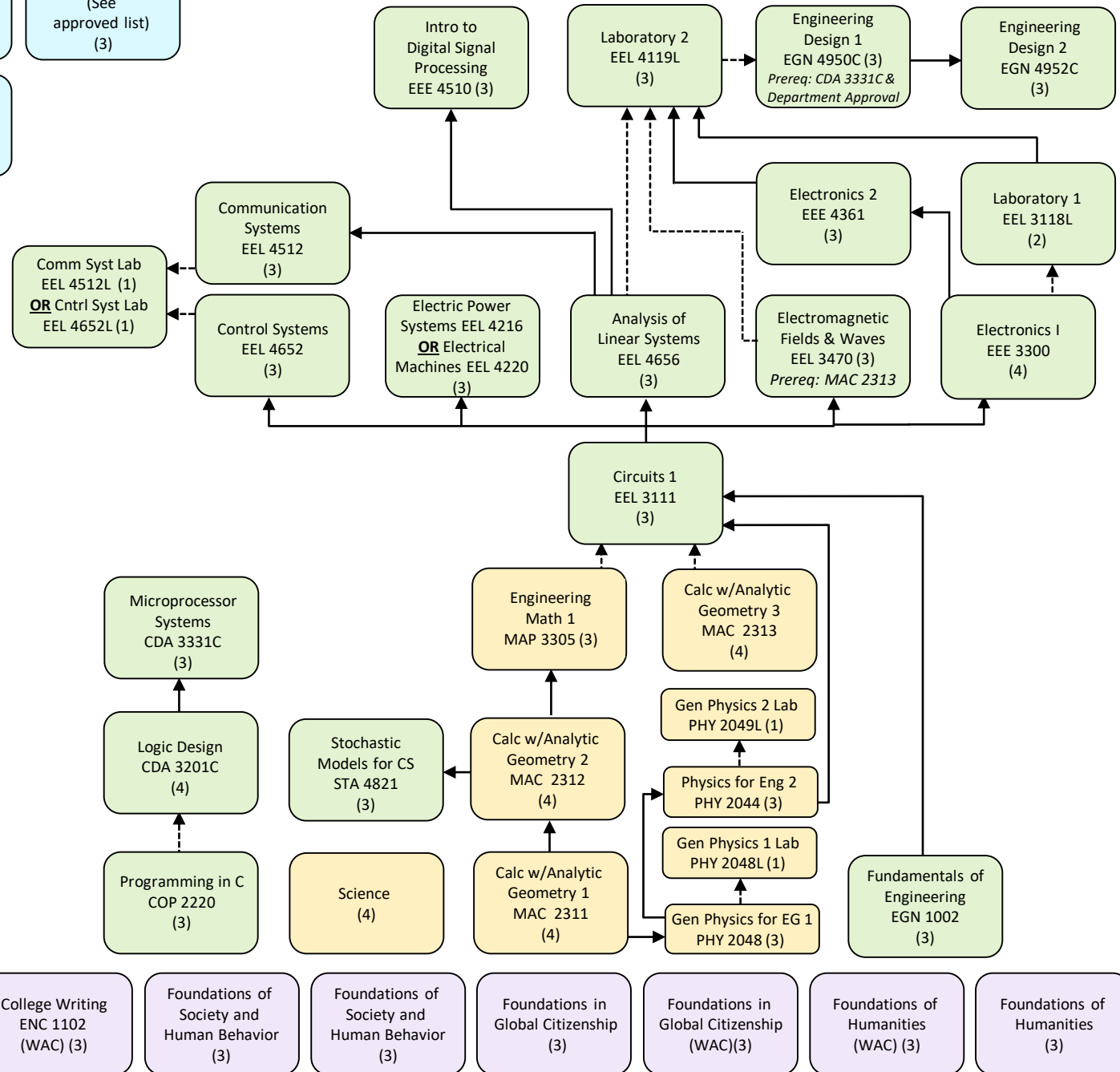
All electives must be approved by your Academic Advisor

## OTHER REQUIREMENTS:


- At least 128 total credits
- At least 45 credits at senior institution.
- At least 53 (25%) upper division EE credits from FAU.

## Foreign Language Admission Requirement

A GRADE OF "C" OR BETTER IS REQUIRED IN ALL CORE, MATH/SCIENCE, AND WAC COURSES.



This flowchart is reviewed periodically and is subject to change as new requirements become necessary to educate engineers. The information is intended to inform and is not a replacement for a degree audit conducted with an academic advisor.

Course Number(s)	Pre/Co-Requisite(s)
For more information on the Intellectual Foundations Program (IFP) requirements, visit:	
EGN 1002	None
MAC 2311	Prerequisite: MAC 1147, MAC 2210, OR MAC 1140 & MAC 1114 w/ a C or better
MAC 2312	Prerequisite: MAC 2311
MAC 2313	Prerequisite: MAC 2312
MAP 3305	Prerequisite: MAC 2312
COP 2220	None
	Prerequisite: MAC 2311
PHY 2048L	Pre/Corerequisite: PHY 2048
PHY 2044	Prerequisite: MAC 2312 and PHY 2048
PHY 2049L	Pre/Corerequisite: PHY 2049 or PHY 2044
"See advisor for approved courses"	
EEL 3111	Prerequisite: PHY 2049 & EGN 1002 Pre/Corerequisite: MAC 2313 & MAP 3305
CDA 3201C	Pre/Corerequisite: COP 2220
EEE 3300	Prerequisite: EEL 3111
EEL 4656	Prerequisite: EEL 3111
STA 4821	Prerequisite: MAC 2312 or MAC 2282
EEL 3118L	Pre/Corerequisite: EEE 3300
EEE 4361	Prerequisite: EEE 3300
EEL 3470	Prerequisite: EEL 3111, MAC 2313
CDA 3331C	Prerequisite: CDA 3201C & COP 2220
EEL 4119L	Prerequisite: EEE 4361, EEL 3118L Pre/Corerequisite: EEL 3470, EEL 4656
EGN 4950C	Prerequisite: CDA 3331C & Pre/Corerequisite: EEL 4119L
EGN 4952C	Prerequisite: EGN 4950C
EEL 4512	Prerequisite: EEL 4556
EEL 4652	Prerequisite: EEL 3111
EEL 4652L OR EEL 4512L	Pre/Corerequisite: EEL 4652L Pre/Corerequisite: EEL 4512L
EEE 4510	Prerequisite: EEL 4656
EEL 4216 OR EEL 4220	Prerequisite: EEL 3111 Prerequisite: EEL 3111
Electrical Engineering Electives	
Electrical or Technical Engineering Elective	In general, a technical elective is defined as an upper-division course with significant technical disciplinary content.
Mathematics Elective	

### OTHER REQUIREMENTS & INFORMATION:

Requirements to Declare Computer Engineering Major: A minimum grade of "C" and in MAC2311 & PHY2048

A Grade of "C" or Better is Required in all orange, green, blue, and WAC courses

At least 128 credits

At least 45 credits in the Upper-Division

At least 31 credits from FAU