

Bachelor of Science in Civil Engineering

Requirements listed are for the catalog effective Fall 2018

engineering-advising@fau.edu • 561.297.2780 • des.sa.fau.edu • cege.fau.edu

Technical Electives Options:

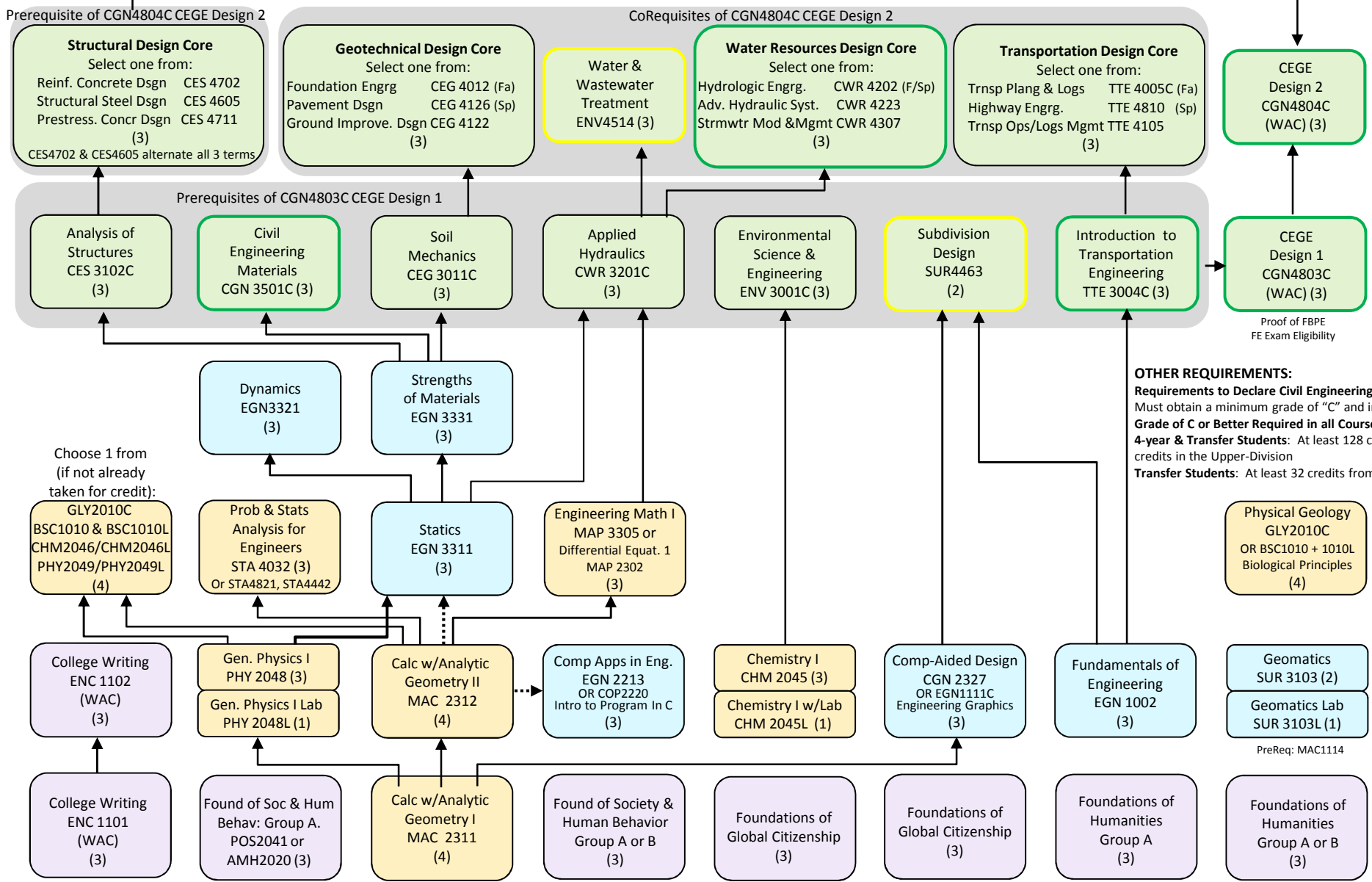
- Any approved 3000- or 4000-level course offered by the CEGE department
- Any graduate course approved by the department (for BS/MS students)

Construction Project Mgmt
CCE 4031
(3)

Civil Engineering Technical Elective (3)

Civil Engineering Technical Elective (3)

Internship/Civil Engineering Tech Elect (3)



OTHER REQUIREMENTS:
Requirements to Declare Civil Engineering Major
 Must obtain a minimum grade of "C" and in MAC2311 & PHY2048
Grade of C or Better Required in all Coursework
4-year & Transfer Students: At least 128 credits; At least 45 credits in the Upper-Division
Transfer Students: At least 32 credits from FAU

LEGEND:

- Pre-Requisite (dashed arrow)
- Pre- or Co- (solid arrow)
- Fall/Spring (green box)
- Spring Only (red box)
- Summer/Fall (yellow box)
- Spring/Summer (orange box)
- Science & Math (light blue box)
- Core Courses (light green box)
- Engineering Fund. Courses (light purple box)
- IFP Requirements (light pink box)

This flowchart is reviewed periodically and is subject to change as new requirements become necessary to educate engineers. The information is intended to inform and is not a replacement for a degree audit conducted with an academic advisor.